



TOILET CUBICLE SERIES
SHOWER CUBICLE

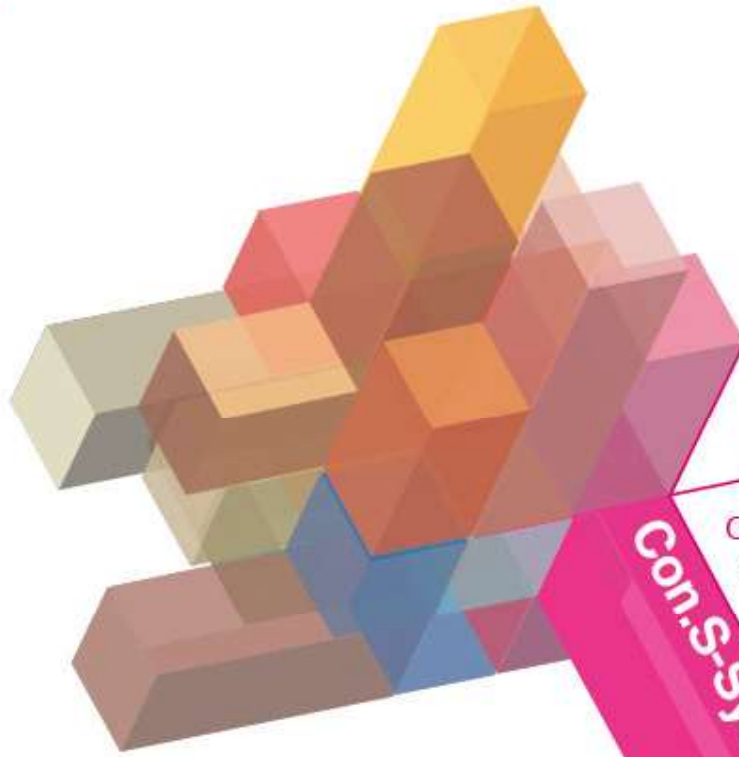


PANEL SYSTEM
WALL PANEL SYSTEM

FACILITIES FOR DISABILITY TOILETS

INTERIOR PROTECTION SYSTEM





Con.S-System

Con.S-System focuses on a minimalist and contemporary style. The toilet cubicles are equipped with stainless steel hardware, and provide a modern and durable appearance. It can be easily applied in all environments.

Recommended for commercial, industrial, educational, and recreational premises such as gymnasiums, clubhouses, and hospitals.





Con-System contemporary design is a crossover of lively appearance, versatile characteristic, and relaxing ambience. Structurally fit to sustain heavy weights with aluminum alloy ceiling and leg supports coated with nylon which are resistant to corrosion and abrasion.

Recommended for commercial, industrial, and recreational premises such as gymnasiums.

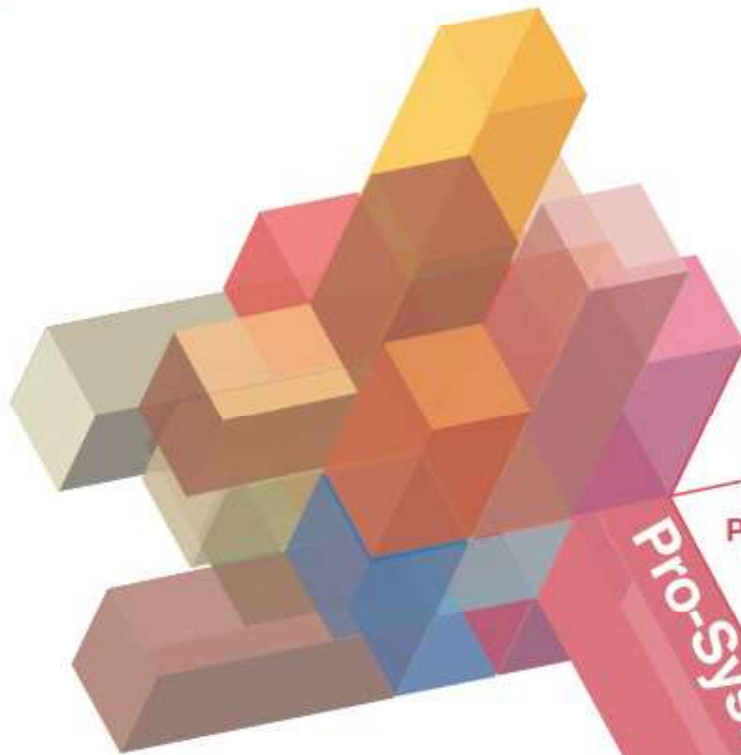




Int-System interface and design is a breakthrough by adding structural elements such as "built-in ending joints" for each pilaster, and "tongue & groove joints" for each inner partition. It harmonizes perfectly with the surroundings with lesser use of accessories while providing the users with the ultimate in visual delight, space optimization, comfort, and luxury.

Recommended for hotel, airports, transit lounges, luxurious club or gym houses and grand shopping malls.





Pro-System

Pro-System professional design highlights the "attach-to-ceiling" conceptual idea to give a hygienic and ventilated environment. It looks trendy and practical from the user's point of view.

Highly recommended for laboratories, food processing units, catering service centers, and medical premises.





Ele-System

Ele-System elegant design exhibits its traditionally modest characteristics of individuality and compatibility. The use of stainless steel hardware integrates classiness, strength, and serviceability.

Recommended for commercial premises, shopping malls, clubhouses, and museums.





Sim-System

Sim-System simplistic design features panels firmly clinched to overhead steel bar accompanied by aluminum alloy and nylon-coated footholds, and highlights structural security and easy maintenance. "Simple, yet elegant," the design provides designers with an extra tool to achieve their creative vision.

Recommended for commercial, industrial, and public premises.





Vetro-System offers a symbol of grace and exquisiteness. The application of various types and design of glass on Omega brand solid phenolic core laminates provide a unique and aesthetic toilet cubicle. Brightness of the glass and facets of Omega brand solid phenolic core laminate make an ideal combination for style and elegance. With the use of stainless steel hardware, the toilet cubicles are especially strong and durable.

Recommended for commercial premises, shopping malls, and clubhouses.

